

# SONIC Wi-Fi

## Product Specification

Product Name: Sonic Wi-Fi  
 Model: WTGSW01-WW  
 Version: 1.0

## Product details

Main function: Water flow measurement  
 Abnormal water flow detection

Other functions: Remote valve control  
 Water temperature and pressure measurements  
 Micro leak detection (pressure-based testing)

Power supply: External PSU, 7.5V DC  
 Battery pack, backup option only<sup>1</sup>  
 (4x AA lithium batteries)

Operating conditions: Indoor use: 0-40°C  
 Water temperature: 0-40°C  
 Pressure: 0-10 bar

Flow measurement: Range: 0.15 - 70 l/min  
 Maximum measured error:  
 ± 50 ml for flow below 1 l/min or ± 5% for flow above 1 l/min  
 Small flows detection: 40-150 ml/min  
 Flow coefficient (C<sub>v</sub>): 4.8 m<sup>3</sup>/h

Dimensions: 20.6 cm x 11.4 cm x 5 cm

Weight: 770 g (unit only)

Connectivity: Wi-Fi - 802.11b/g/n (2.4GHz only)

Certifications:

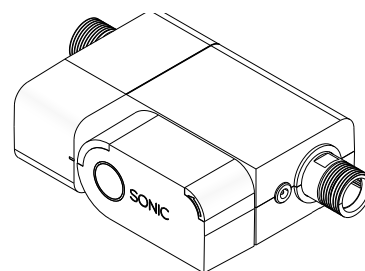
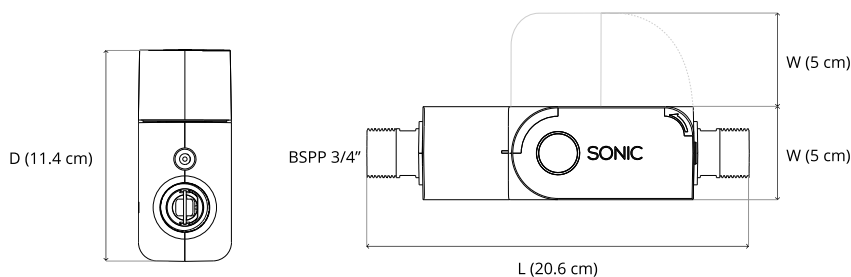


## Packaging

	Weight	Dimensions
Sonic Wi-Fi + PSU	1130 g	L: 32.0 cm W: 15.3 cm H: 6.8 cm
Sonic Wi-Fi + PSU + 4 x AA lithium batteries	1190 g	

## Accessories

Power Supply Unit (PSU): Input: 100-240 V AC, ~50/60 Hz, 0.35 A  
 Output: 7.5 V DC, 1.33 A  
 Cable length: 180 cm  
 Mains plug type: US with UK adaptor



<sup>1</sup> The device can work for up to 40 hours on new lithium batteries, in case of emergency. Use this as a backup for short power outages only.